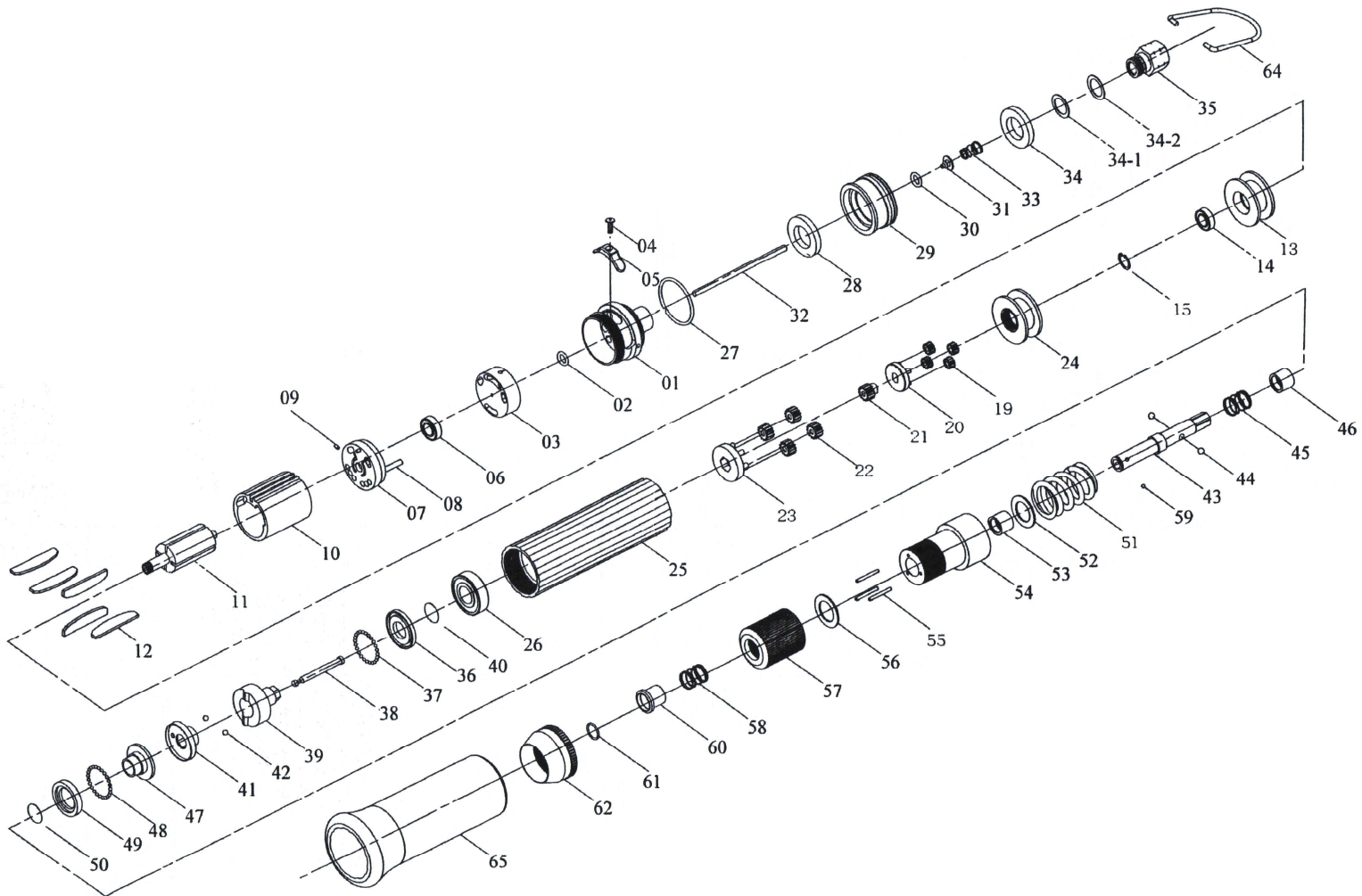


VISSEUSE PNEUMATIQUE AT18-55B



| Rep. | Référence | Désignation | |
|------|-----------|---------------------|---|
| 1 | 1855-01 | Carter AR | * |
| 2 | 1855-02 | Joint | |
| 3 | 1855-03 | Soupape d'admission | |
| 4 | 1855-05 | Vis | |
| 5 | 1855-04 | Bouton d'inversion | * |
| 6 | AT10-21 | Roulement | * |
| 7 | 1855-07 | Flasque AR | |
| 8 | 1855-08 | Goupille | |
| 9 | 1855-09 | Goupille | * |
| 10 | 1855-10 | Stator | * |
| 11 | 1855-11 | Rotor | * |
| 12 | 1855-12 | Palettes (5) | * |
| 13 | 1855-13 | Flasque AV | * |
| 14 | 1855-14 | Roulement | |
| 15 | 1855-36 | Circlip | * |
| 19 | 1855-19 | Satellites (4) | |
| 20 | 1855-20 | Cage planétaire | * |
| 21 | 1855-21 | Engrenage principal | * |
| 22 | 1855-22 | Satellites (4) | |
| 23 | 1855-23 | Cage planétaire | * |
| 24 | 1855-24 | Engrenage intérieur | |

| Rep. | Référence | Désignation | |
|------|-----------|-------------------------------------|---|
| 25 | 1855-25 | Carter principal | |
| 26 | 301030 | Roulement | * |
| 27 | 1855-27 | Joint | * |
| 28 | 1860-28 | 1er silencieux | |
| 29 | 1855-29 | Echappement | |
| 30 | 1855-30 | Joint | * |
| 31 | 6S2021 | Clapet de coupure | |
| 32 | 1855-31 | Tige de coupure | |
| 33 | 1855-33 | Ressort | |
| 34 | 1860-44 | 2e silencieux | |
| 34-1 | 2Q5001 | Joint | |
| 34-2 | 7L0002 | Entretoise | |
| 35 | 1855-35 | Admission | |
| 36 | 1855-37 | Cage à billes | |
| 37 | 1855-38 | Bille (32) | |
| 38 | 1855-39 | Guide | |
| 39 | 1855-40 | Plateau AR embr. ⁹⁰ | |
| 40 | 6N2006 | Circlip | |
| 41 | 1855-41 | Plateau central embr. ⁹⁰ | |
| 42 | 80333 | Bille (2) | |
| 43 | 1855-44 | Arbre interne | |

| Rep. | Référence | Désignation | |
|------|-----------|-----------------------|---|
| 44 | 387042 | Bille | |
| 45 | 1855-51 | Ressort | |
| 46 | 1855-47 | Manchon | |
| 47 | 1855-46 | Plateau AV embrayage | |
| 48 | 1855-48 | Bille (25) | |
| 49 | 1855-49 | Cage à billes | |
| 50 | 1855-50 | Clip | |
| 51 | 1855-53 | Ressort | |
| 52 | 1855-54 | Rondelle | |
| 53 | 1855-63 | Manchon | |
| 54 | 1855-57 | Carter d'embrayage | |
| 55 | 1855-58 | Goupille (3) | |
| 56 | 1855-59 | Rondelle | |
| 57 | 1855-60 | Capuchon | |
| 58 | 1855-61 | Ressort | |
| 59 | 4B1012 | Bille | |
| 60 | 1855-55 | Manchon | |
| 61 | 1855-64 | Clip | |
| 62 | 1855-65 | Carter AV | |
| 64 | 1855-68 | Anneau de suspension | |
| 65 | 1855-70 | Manchon de protection | * |

* pièces d'usure